



**REGIONAL SPECIALISED METEOROLOGICAL CENTRE-TROPICAL CYCLONES, NEW DELHI
TROPICAL WEATHER OUTLOOK**

DEMS-RSMC TROPICALCYCLONES NEW DELHI DATED 11.10.2022

TROPICAL WEATHER OUTLOOK FOR NORTH INDIAN OCEAN (THE BAY OF BENGAL AND ARABIAN SEA) VALID FOR NEXT 120 HOURS ISSUED AT 0600 UTC OF 11.10.2022 BASED ON 0300 UTC OF 11.10.2022.

BAY OF BENGAL:

A CYCLONIC CIRCULATION LIES OVER NORTH ANDAMAN SEA & NEIGHBOURHOOD AND EXTENDS UPTO 3.1 KM ABOVE MEAN SEA LEVEL.

SCATTERED TO BROKEN LOW AND MEDIUM CLOUDS WITH EMBEDDED MODERATE TO INTENSE CONVECTION LAY OVER SOUTH BAY OF BENGAL, ANDAMAN SEA AND CENTRAL BAY OF BENGAL.

PROBABILITY OF CYCLOGENESIS (FORMATION OF DEPRESSION) DURING NEXT 120 HRS:

24 HOURS	24-48 HOURS	48-72 HOURS	72-96 HOURS	96-120 HOURS
NIL	NIL	NIL	NIL	NIL

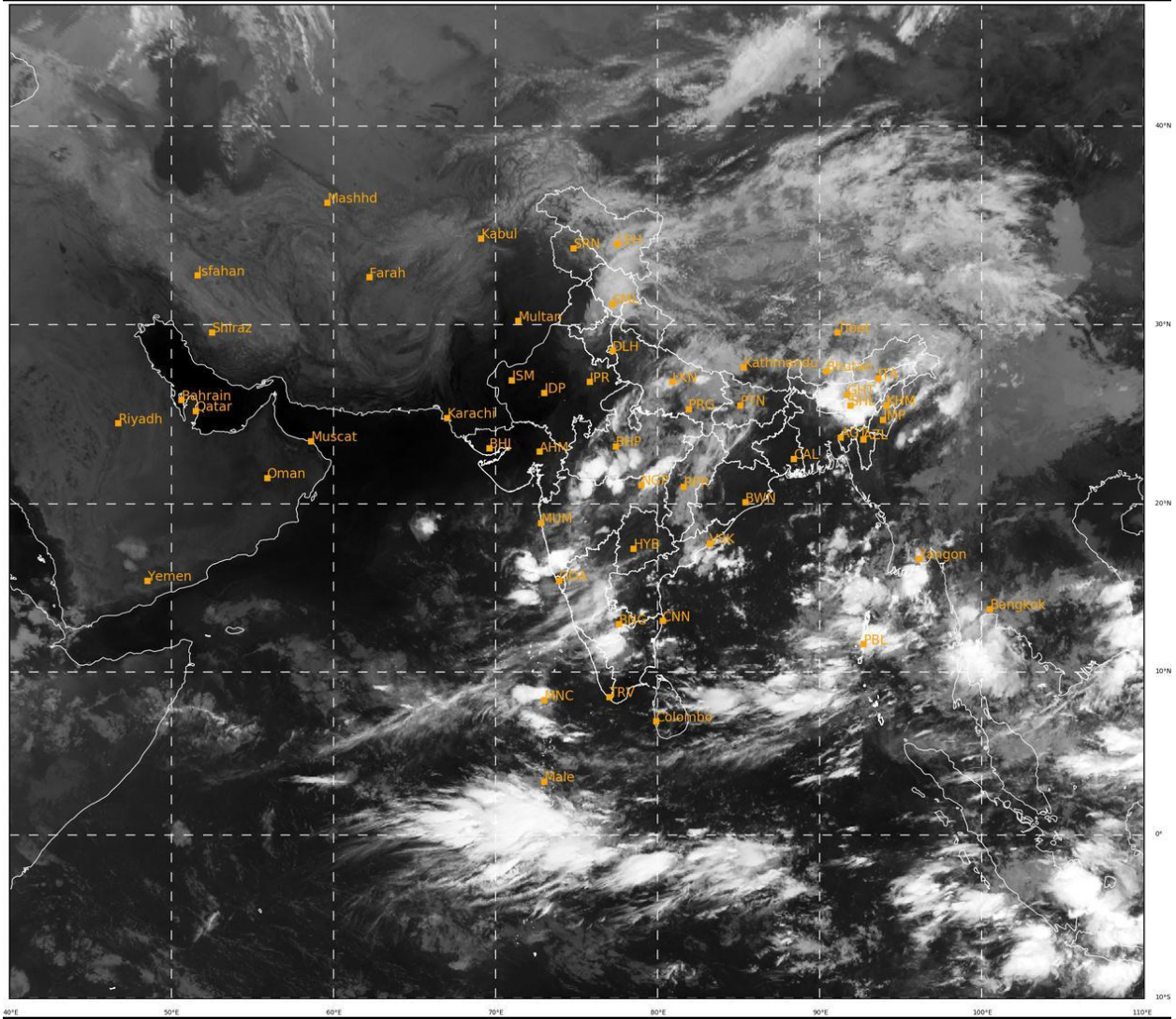
ARABIAN SEA:

SCATTERED LOW AND MEDIUM CLOUDS WITH EMBEDDED MODERATE TO INTENSE CONVECTION LAY OVER EASTCENTRAL & SOUTHEAST ARABIAN SEA, LAKSHADWEEP ISLANDS AREA AND COMORIN AREA.

PROBABILITY OF CYCLOGENESIS (FORMATION OF DEPRESSION) DURING NEXT 120 HRS:

24 HOURS	24-48 HOURS	48-72 HOURS	72-96 HOURS	96-120 HOURS
NIL	NIL	NIL	NIL	NIL

Remarks: NIL



IMD, DELHI

Cloud distribution: (a) Isolated: <25%, Scattered:25-50%, Broken: 51-75%, Solid:>75%, Convection Intensity: (a) Weak: Cloud Top Temperature (CTT) >-25°C, (b) Moderate: CTT: - 25°C to -40°C, (c) Intense: CTT: - 41°C to -70°C and (d) Very Intense: : Less than -70°C
PROBABILITY OF CYCLOGENESIS (FORMATION OF DEPRESSION):NIL: 0%, LOW: 1-33%, , MODERATE: 34-66% AND HIGH: 67-100%
This is a guidance Bulletin for WMO/ESCAP Panel Member countries. Visit respective National websites for Country specific Bulletins